

BETA



# STEALTHBURNER

WE BUILD SPACE SHUTTLES WITH GARDENING TOOLS

V1.02-BETA

BETA

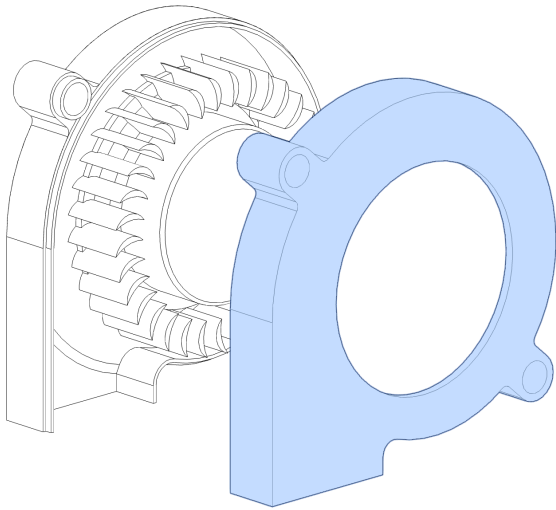
This document is intended to help you assemble BETA version of StealthBurner toolhead system.

Be aware these steps may differ from the final release version.

Good luck! 🍊

---

4	COOLING FAN PREP
5	X CARRIAGE FRAME
8	CLOCKWORK2
17	FAN MODULE
22	HOT END HOUSING
24	FINAL ASSEMBLY
28	CW2 EXPLODED DIAGRAM

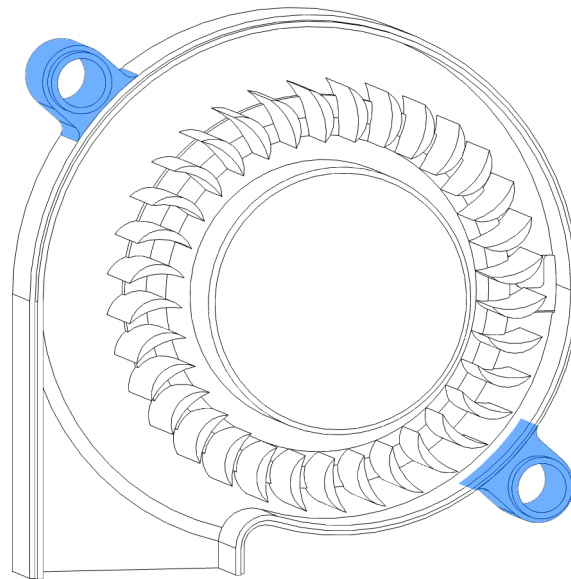


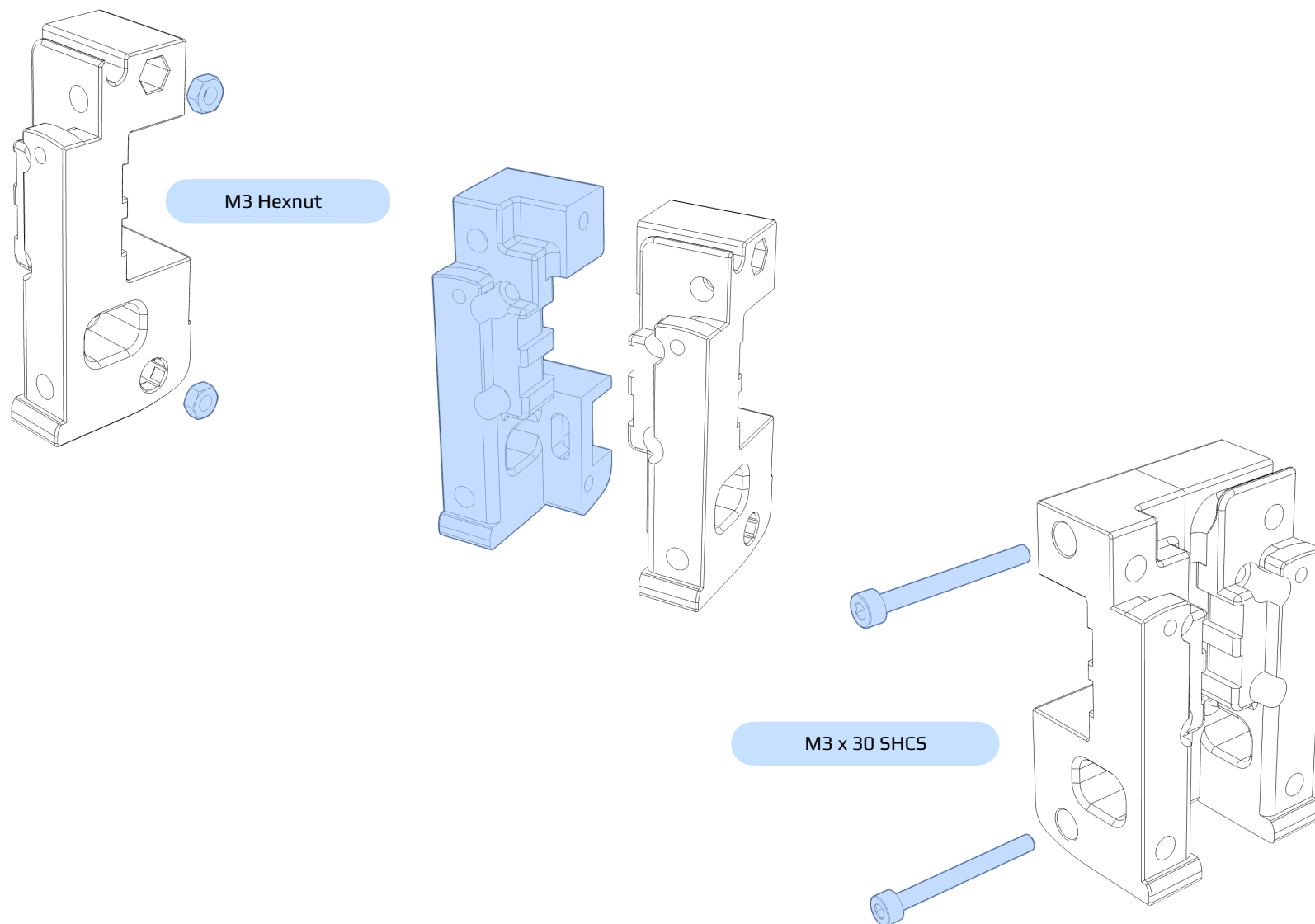
## NOTE

Remove the front of the 5015 fan. Clip off and file down the stock mounting ears.

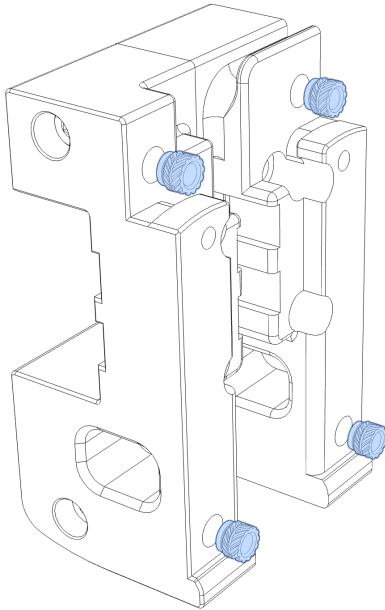
There's a trimming jig STL included in the release to make this task easier.

Do not damage the rear housing in the process.

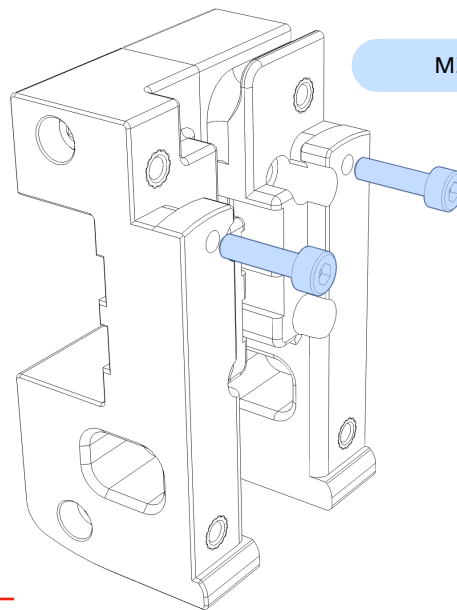




## M3 Threaded Inserts

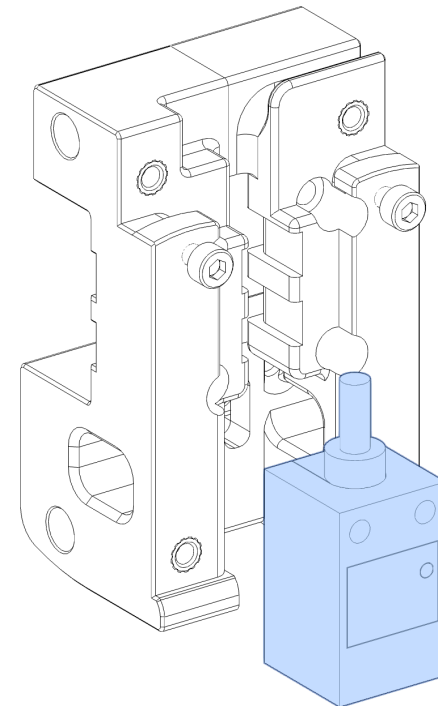


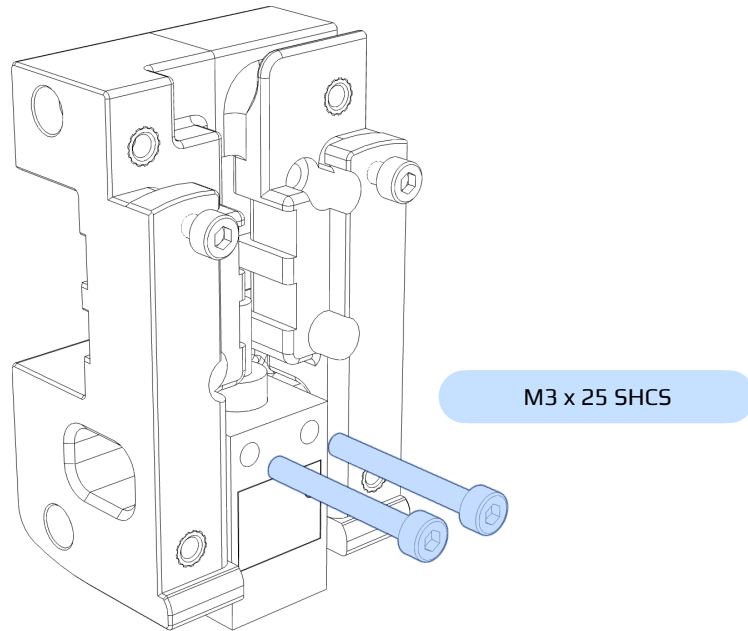
## M3 x 12 SHCS

**NOTE**

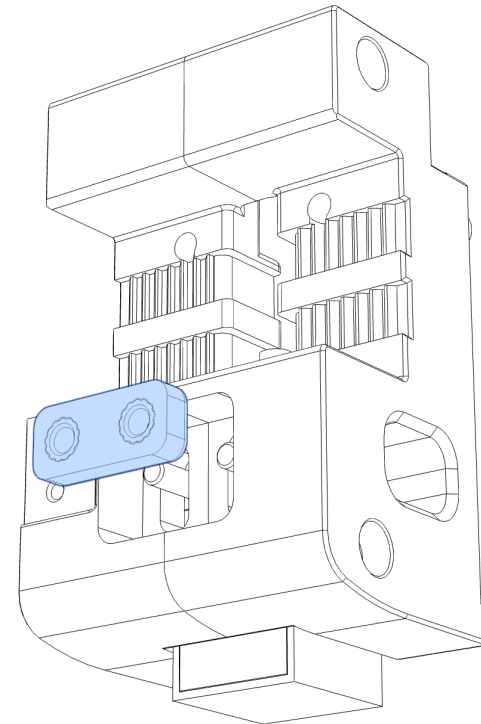
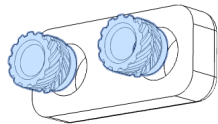
Screws thread directly into plastic and serve as indexing pins for the hot end housing.

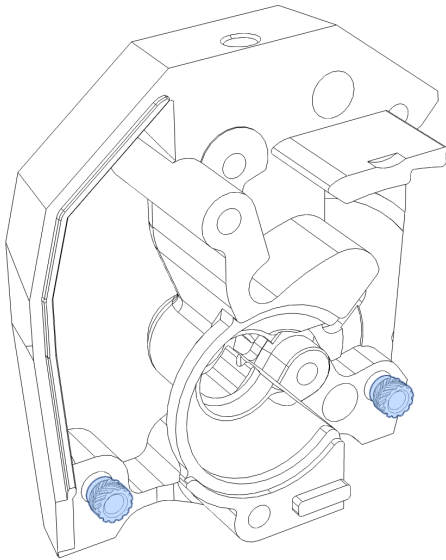
Leave an approximately 2mm gap when installing.



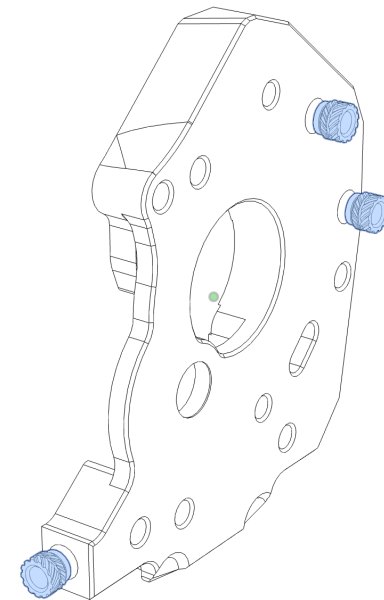
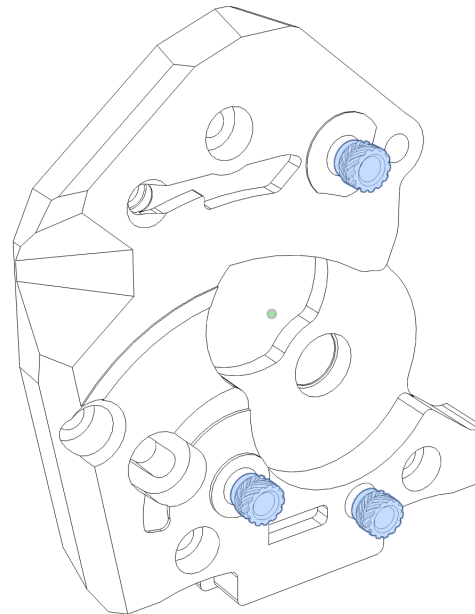


M3 Threaded Inserts



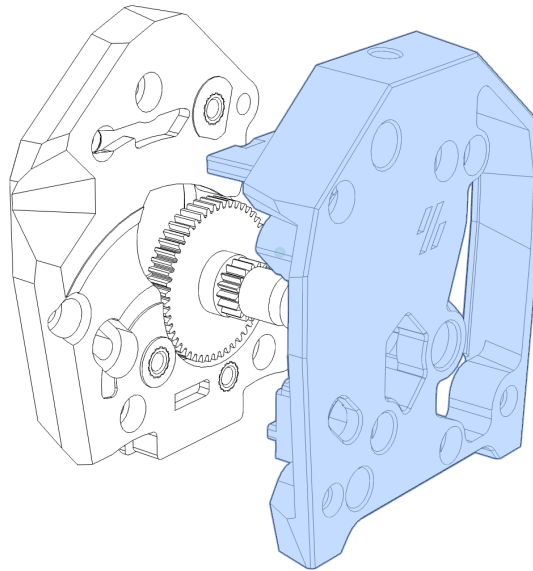
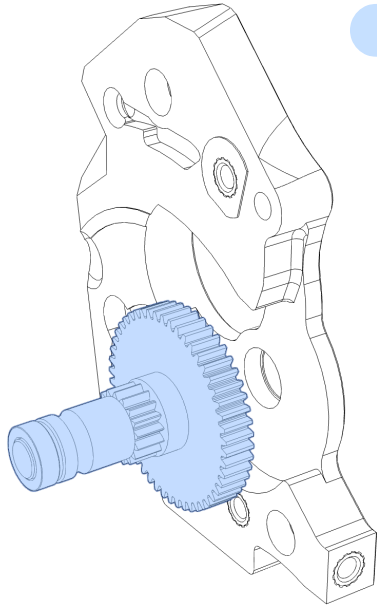


M3 Threaded Inserts

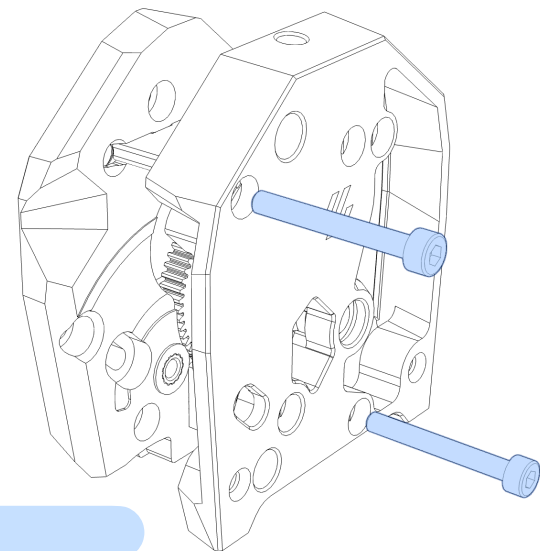




BMG Driveshaft Assembly

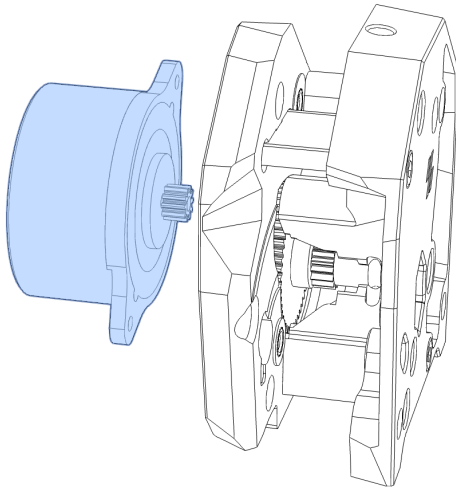
**NOTE**

Do not over tighten the screws to avoid binding.



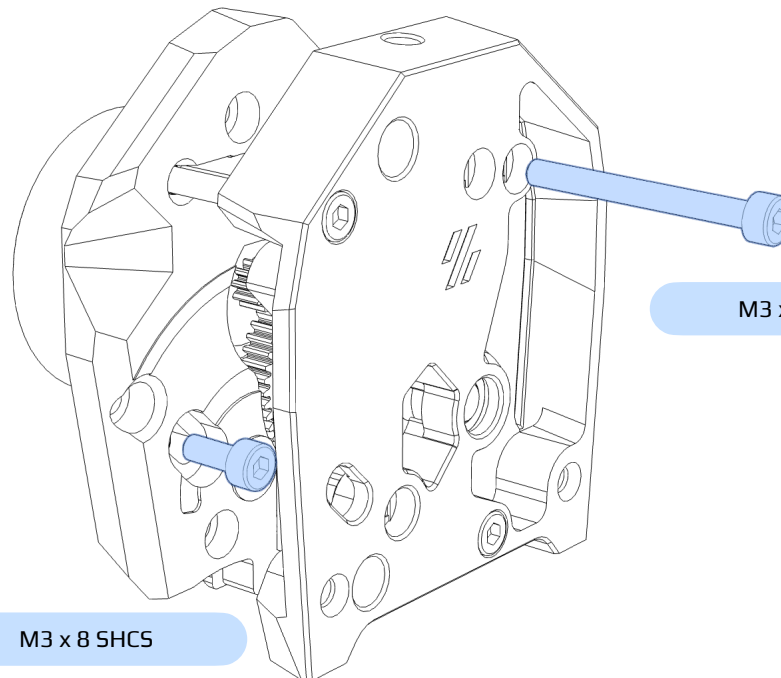
M3 x 25 SHCS

## NEMA14 Pinion Stepper Motor



## NOTE

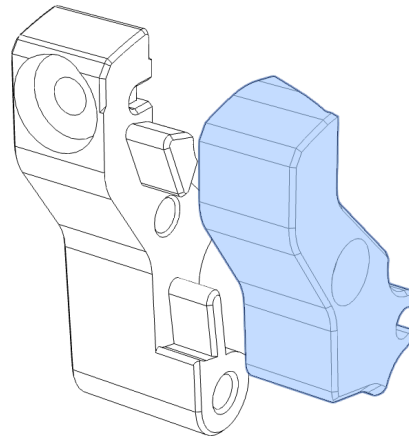
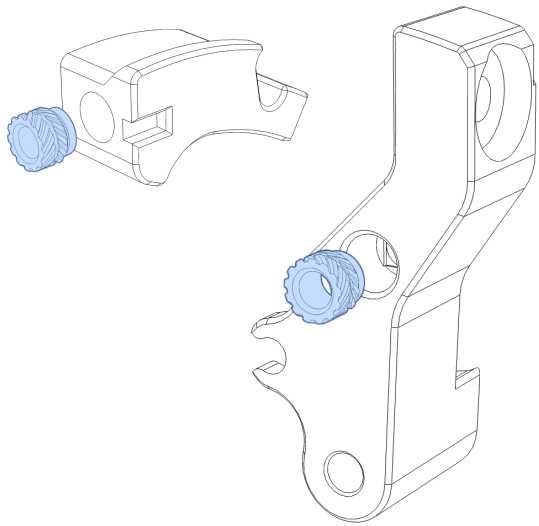
Pivot the motor to find the correct gear mesh position. There should be very slight backlash in the main drive gear.



M3 x 8 SHCS

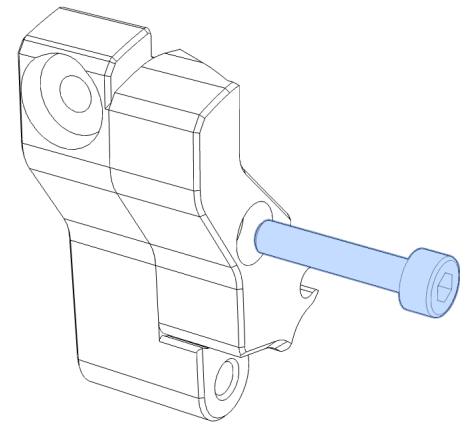
M3 x 30 SHCS

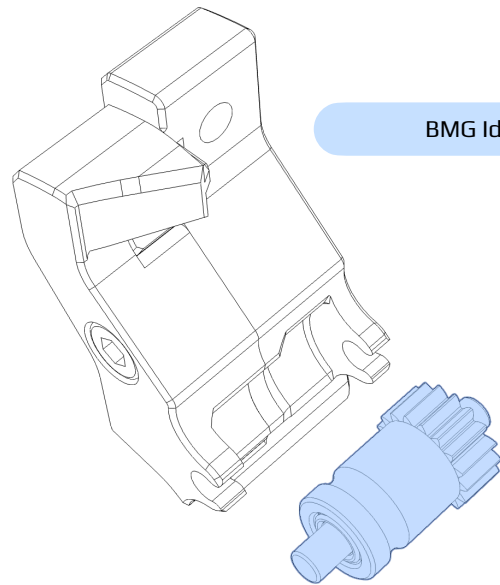
M3 Threaded Insert

**NOTE**

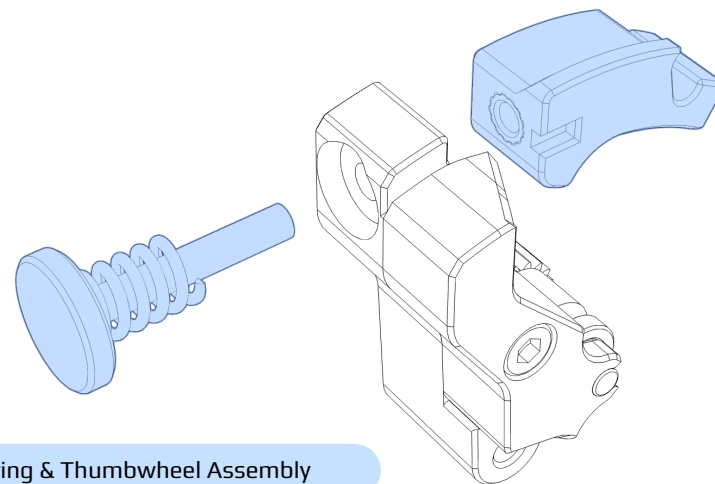
Screw hole clearances in the guilder are intentionally tight to ensure correct alignment.

M3 x 16 SHCS

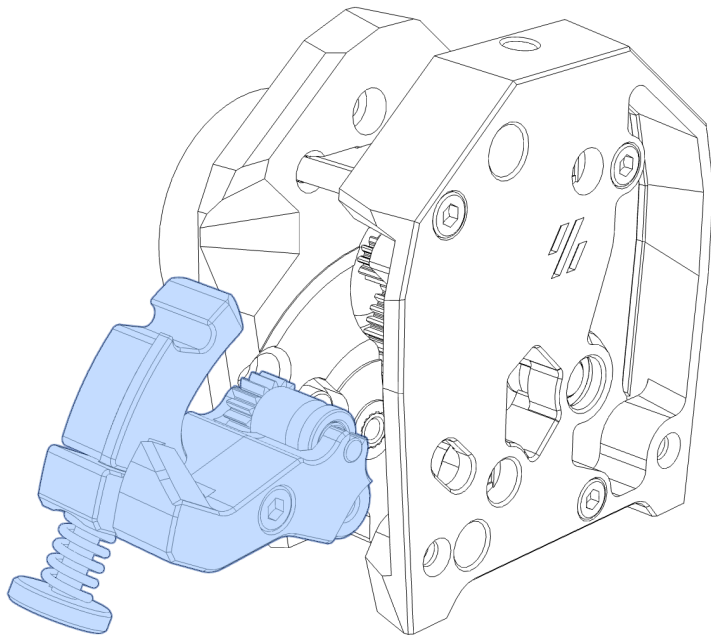




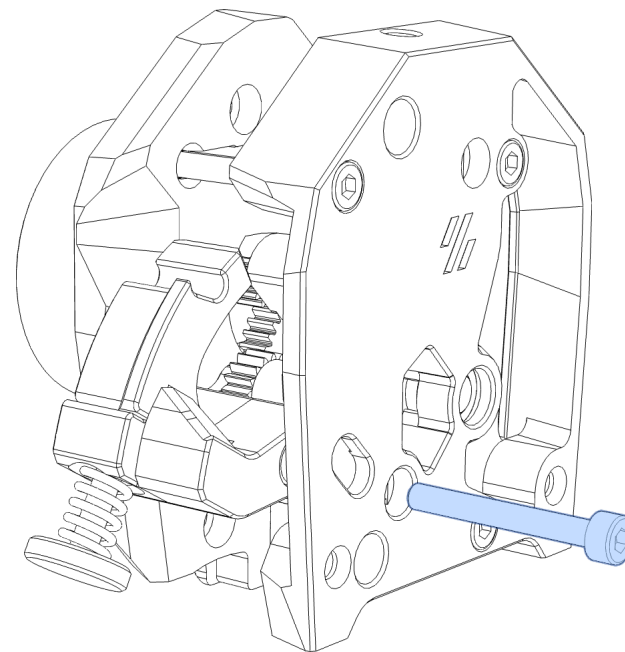
BMG Idler Gear Assembly

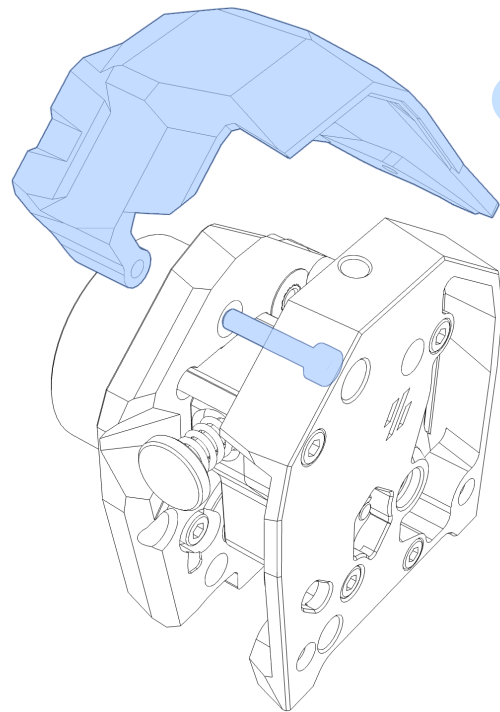


BMG Spring & Thumbwheel Assembly

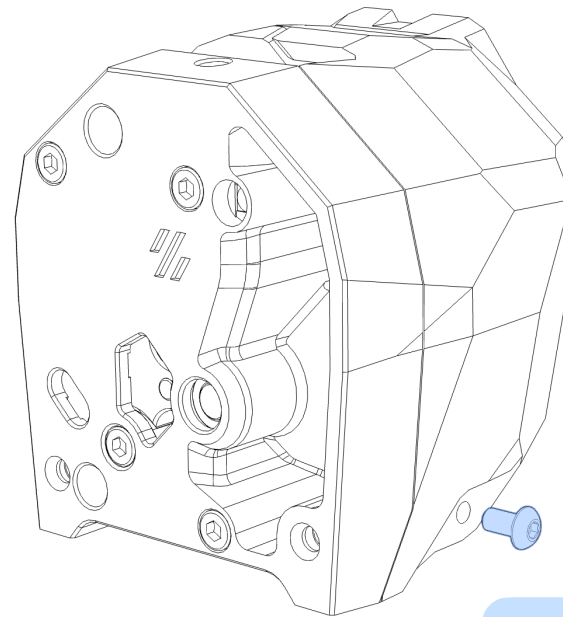


M3 x 25 SHCS

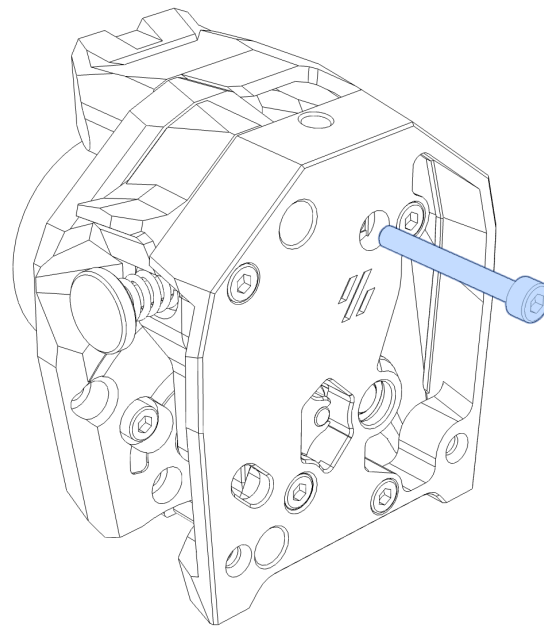
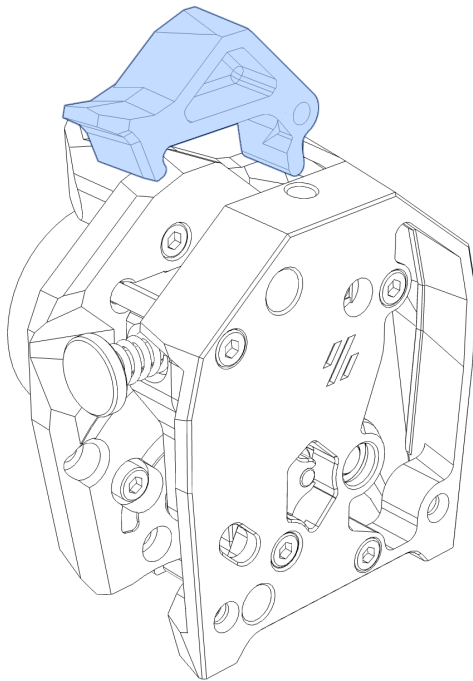




M3 x 16 SHCS

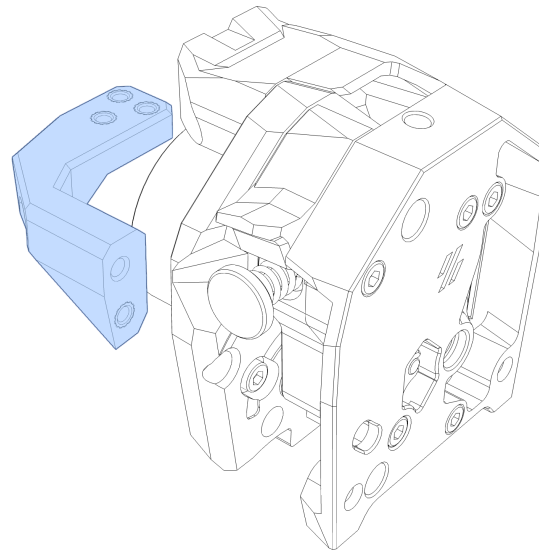
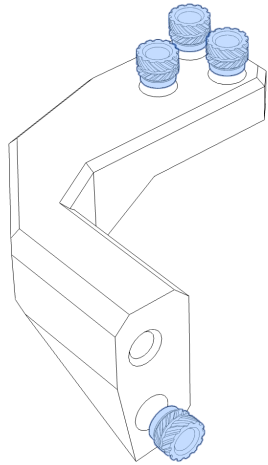


M3 x 6 BHCS

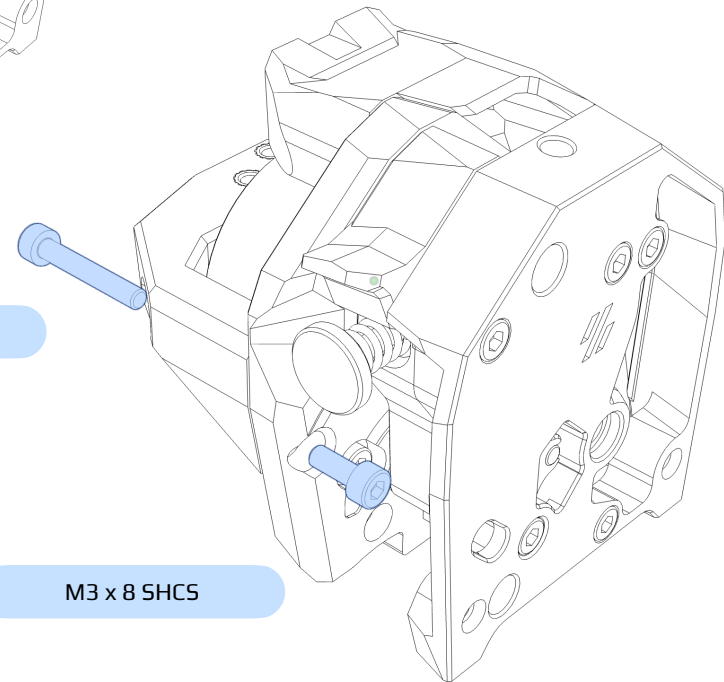


M3 x 20 SHCS

## M3 Threaded Inserts

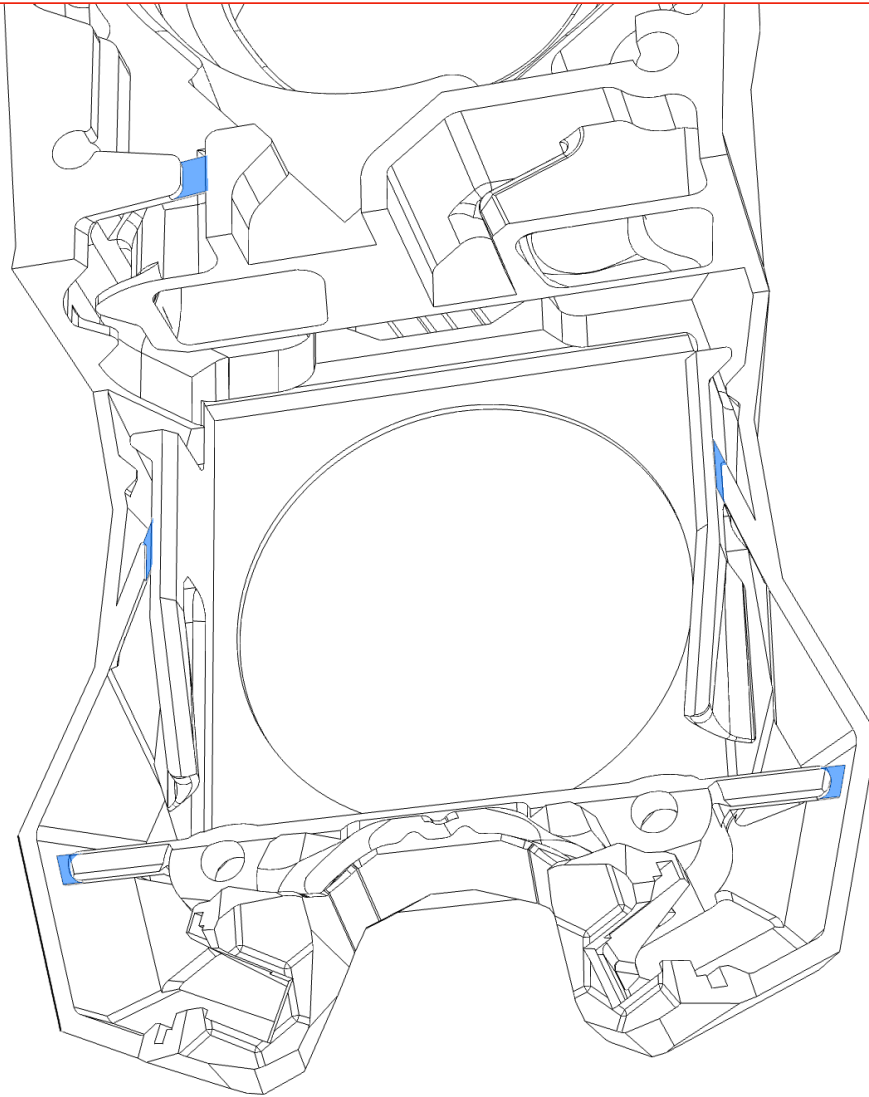


M3 x 20 SHCS



M3 x 8 SHCS

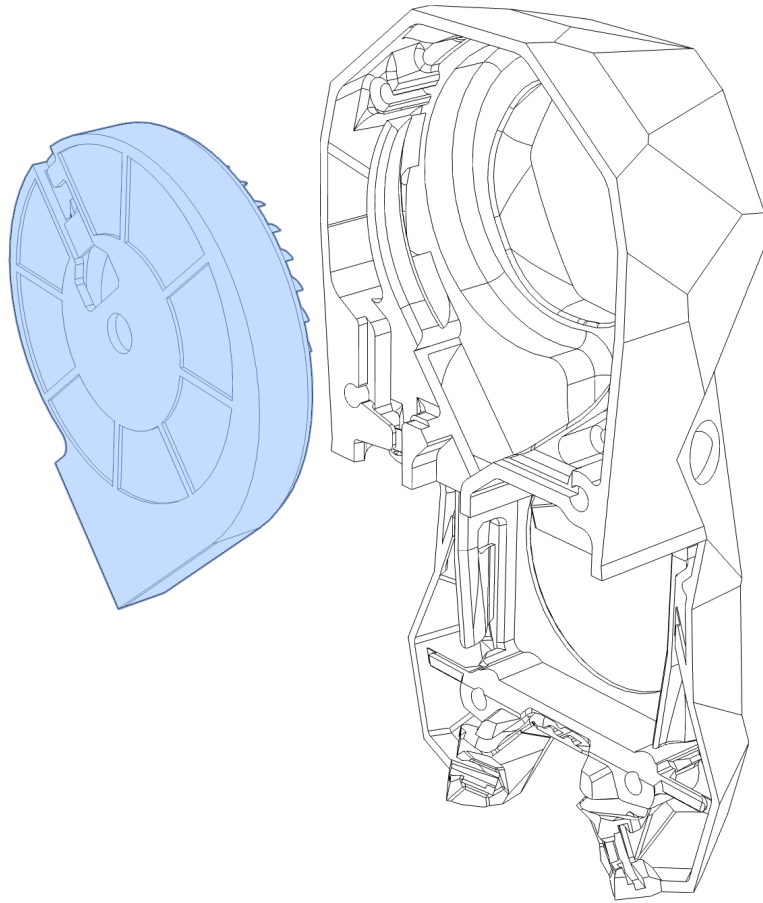




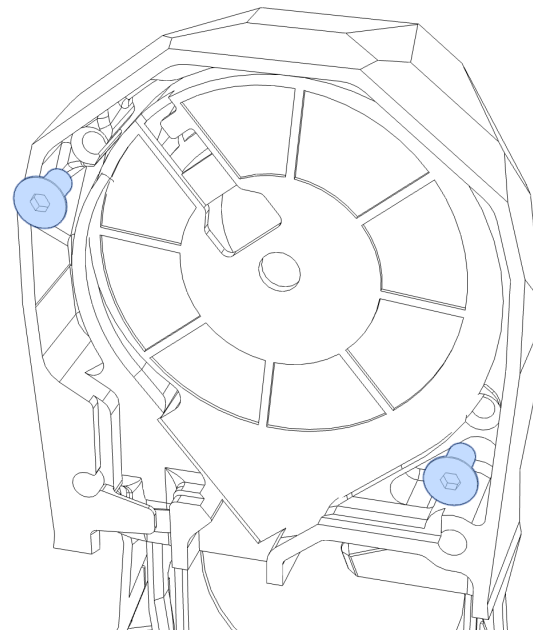
### NOTE

Trim off bridge supports from wire management tabs.

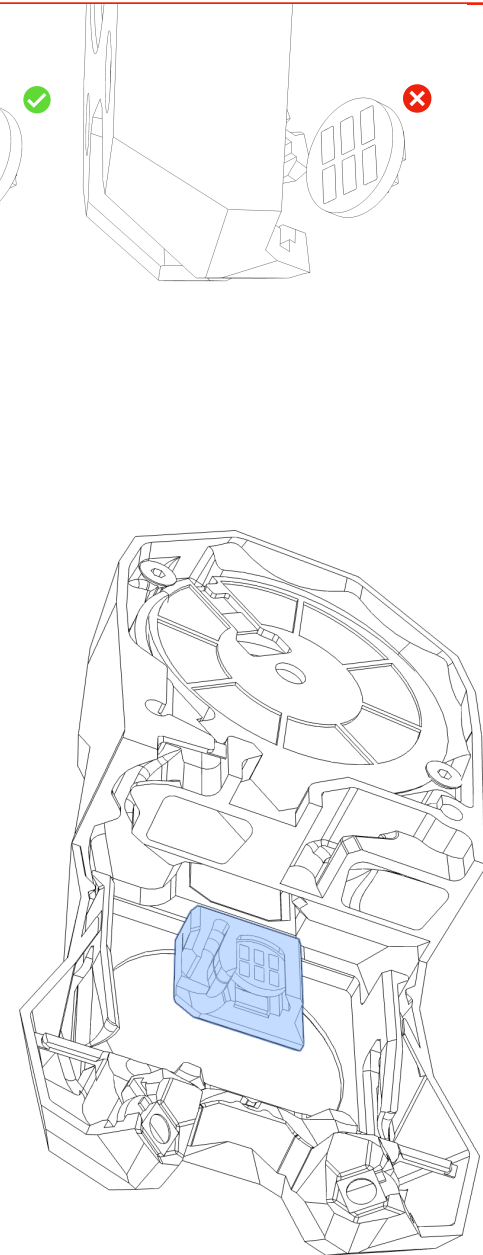
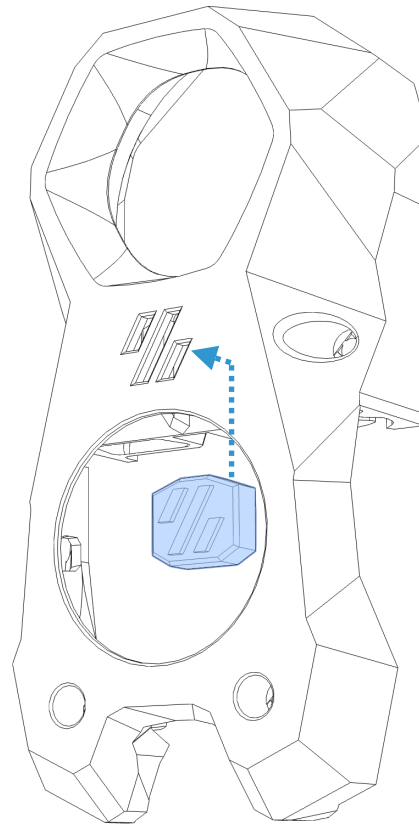
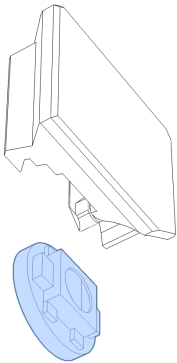
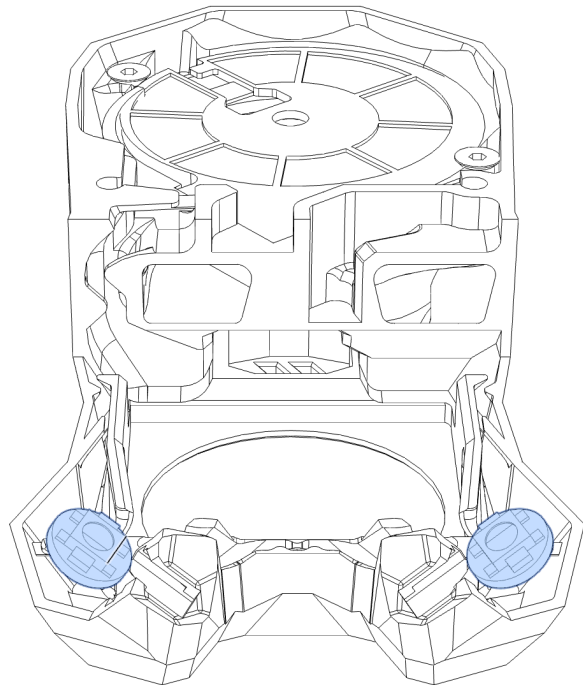
5015 Fan (Trimmed)

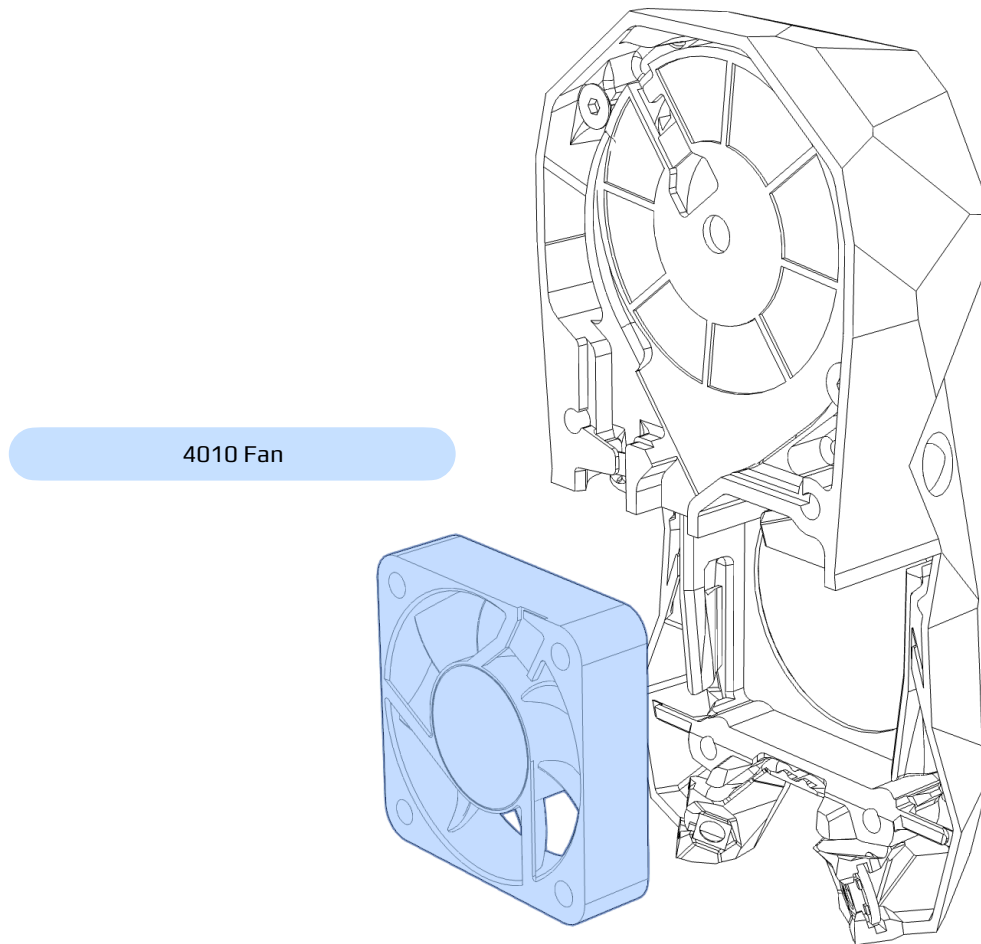


M3 x 6 FHCS



RGBW LED Module

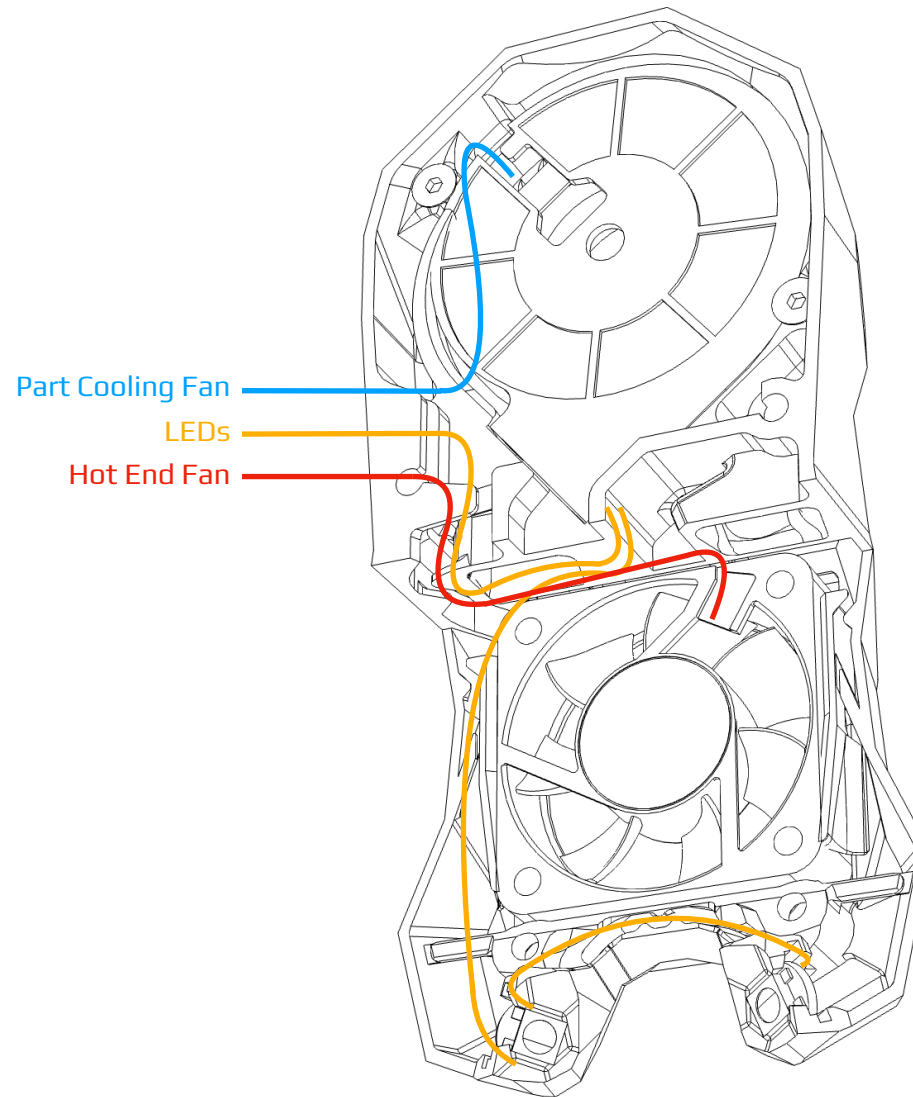




### NOTE

Tip the fan towards the top when inserting, then push down to fully seat.

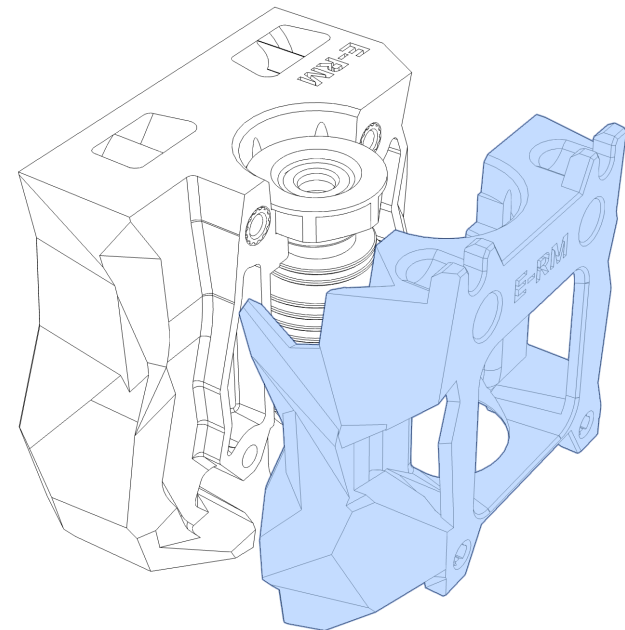
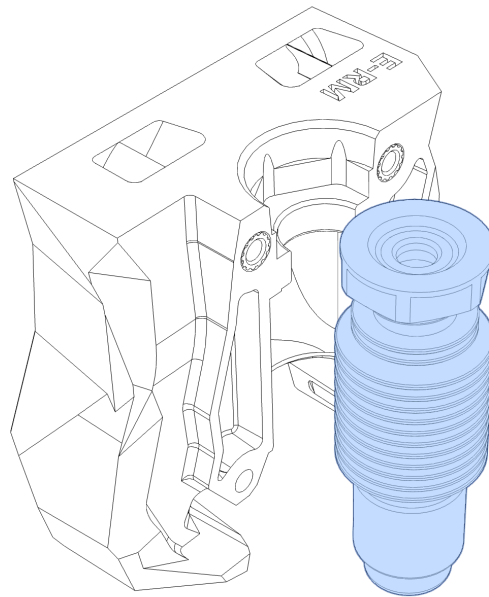
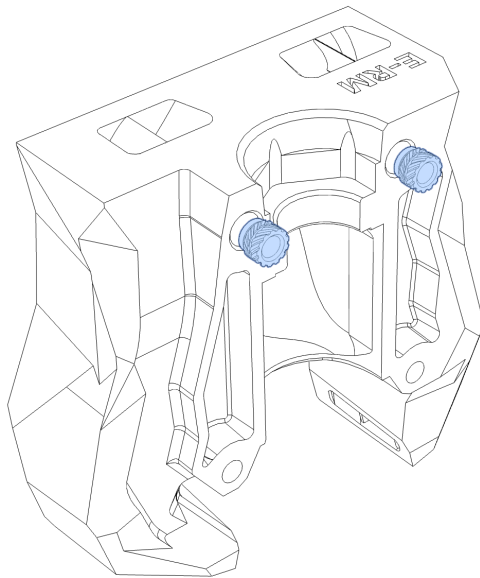
Ensure wires are fully seated in the top channel.

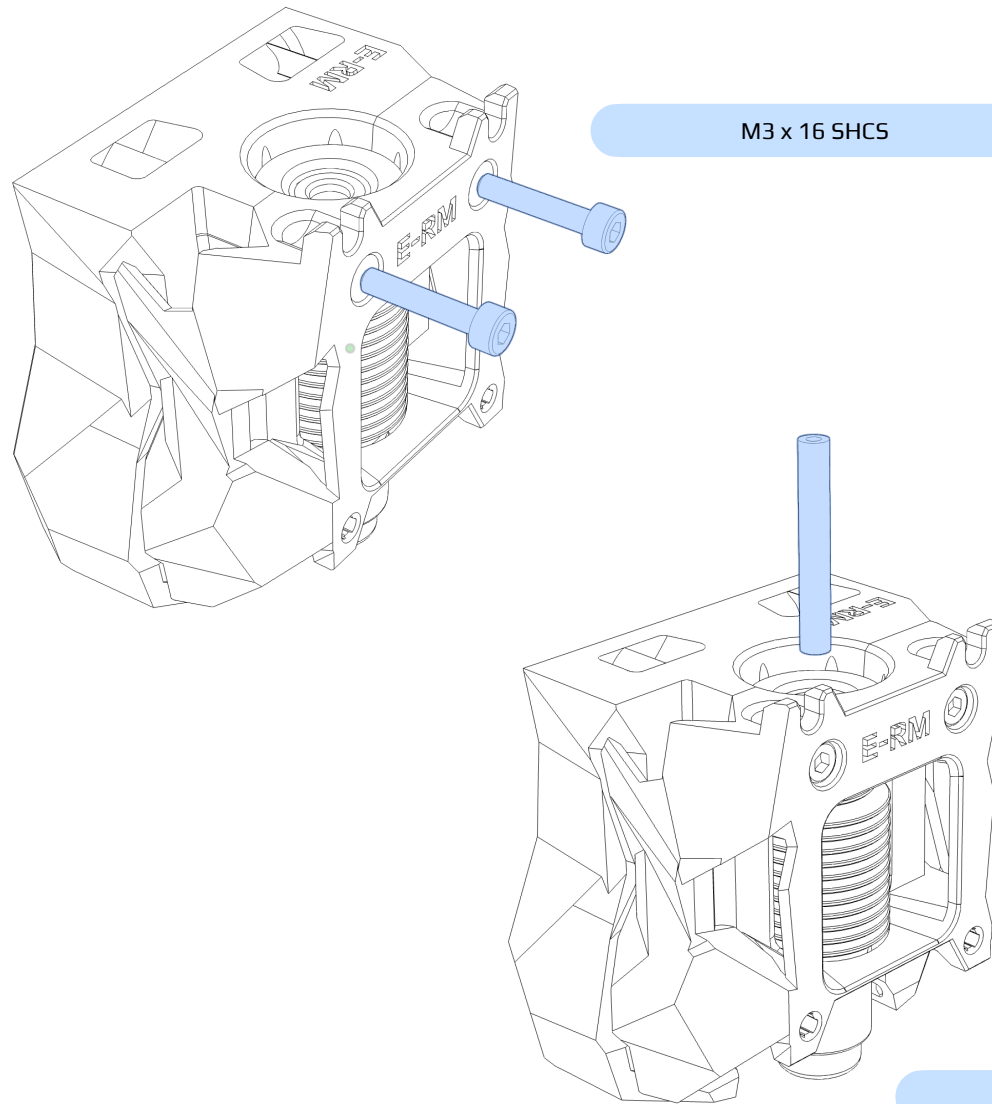


## M3 Threaded Inserts

## NOTE

E3D Revo Micro housing is pictured. Assembly steps for all hot end housings are identical.

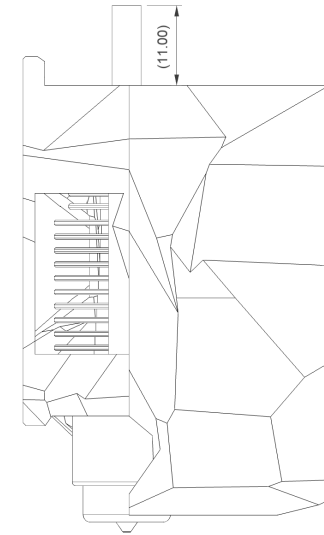


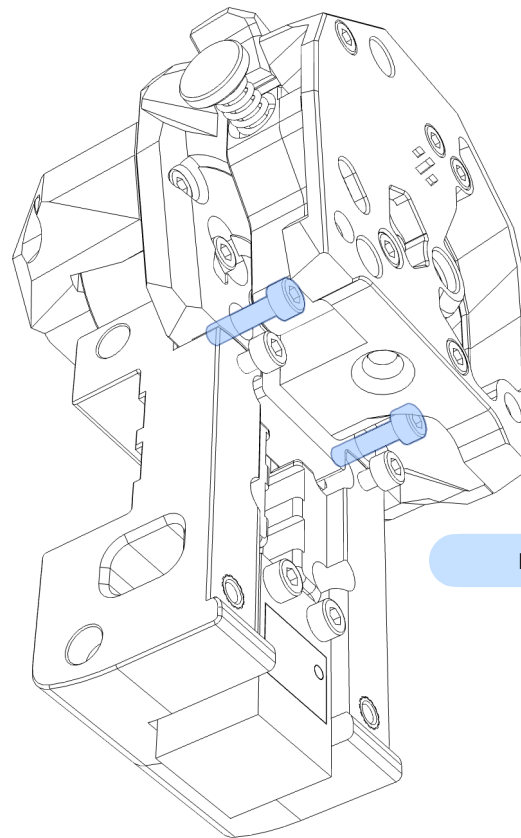
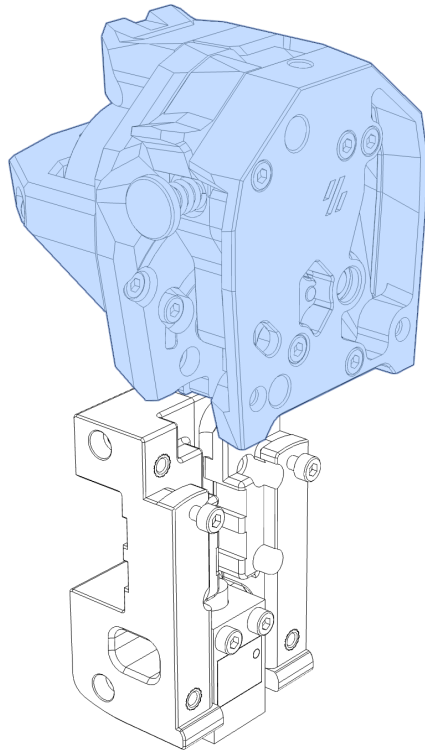


### NOTE

Use the channel on the side of the housing to route hot end cables before tightening the screws

PTFE tube length varies and is dependent on the hot end used.

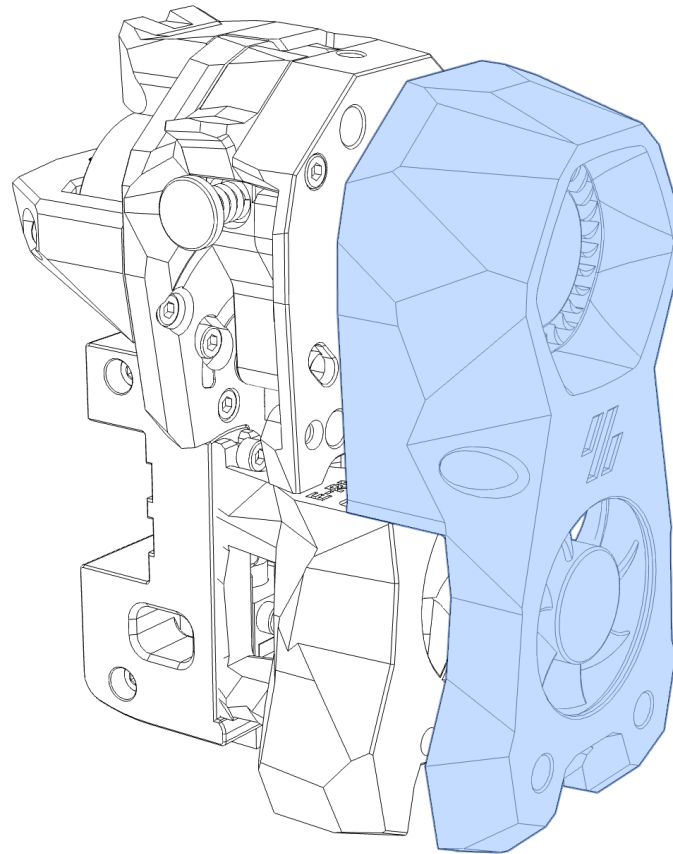
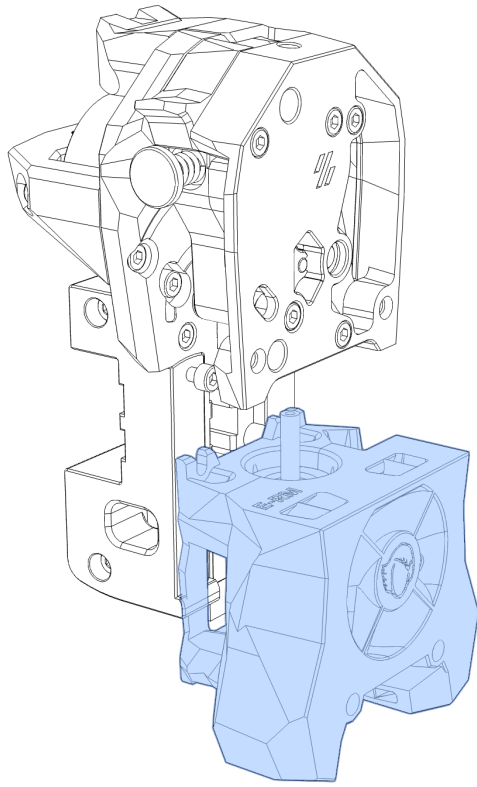


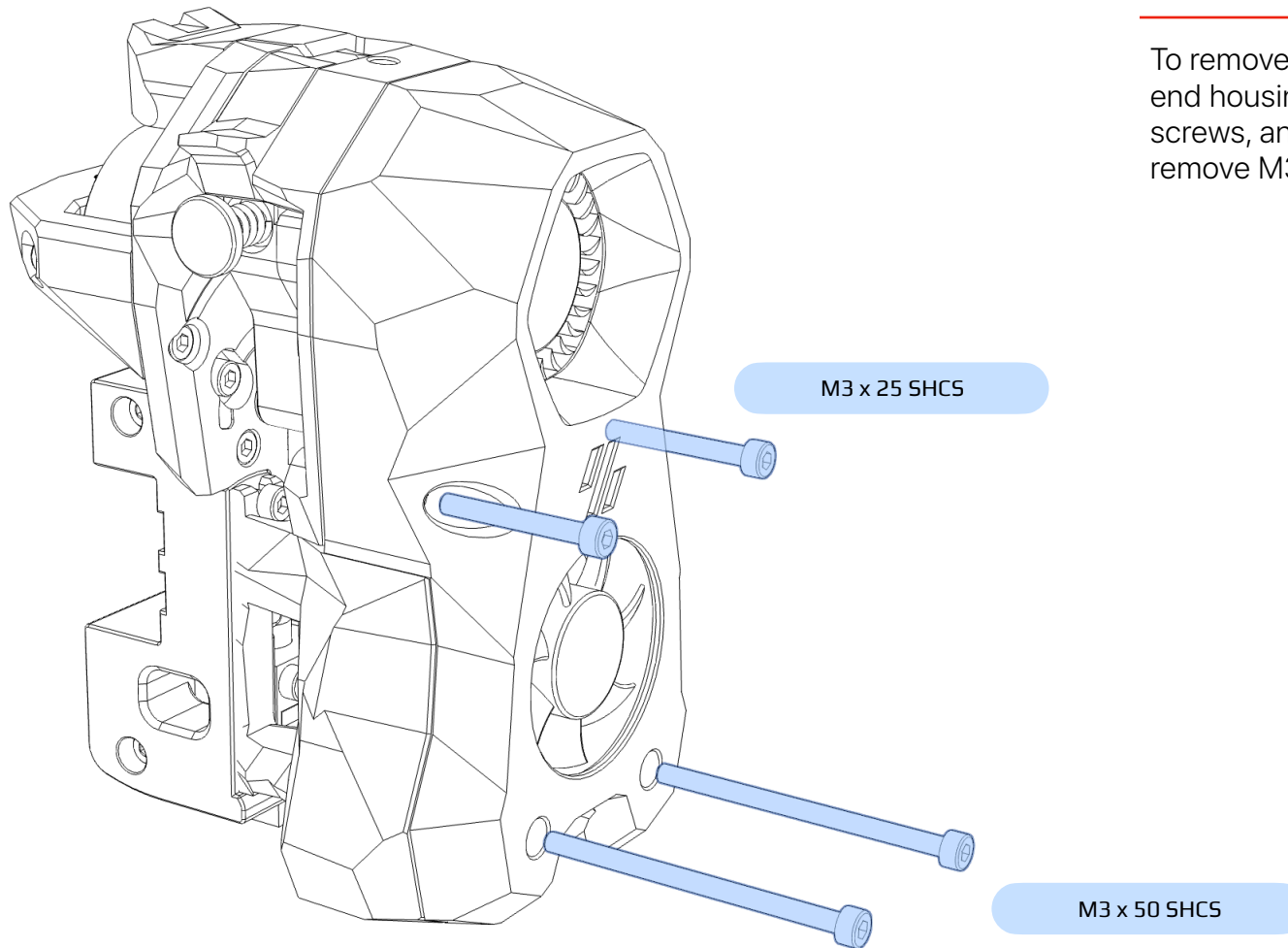


### NOTE

X Carriage should already be mounted on the MGN12 rail and secured with four M3x8 SHCS







### NOTE

To remove and install the hot end housing, loosen M3x25 screws, and completely remove M3x50 screws.

Please provide any and all feedback on this BETA by filing a GitHub issue on the [Voron-Afterburner repo](#)

and / or

by voicing your experience in the [#stealthburner\\_beta](#) channel of our Discord server

[VORON Design Discord](#)

Enjoy!

